



CANAL PLACE

200 Market Street, Lowell, Massachusetts 01852 (617) 454-0009

A Sense of Space & Gracious Living

B

lend the past with the comfort and beauty of your future. Choose to live at Canal Place in the heart of historic Lowell—an initiator of the 19th century Industrial Revolution and a model for today's New England technological and cultural rejuvenation.

Canal Place is a fine example of the creative use of historic buildings. It is one of Lowell's many success stories, which are the result of the extraordinary coopera-

tion of private and public funding sources that have brought about the rebirth of a city.

Canal Place is a 1911 textile mill transformed into elegant condominium units. It is situated on the Pawtucket Canal, the initial part of the complex 5.5 mile waterpower system built in the 1790's to feed the booming mills of 19th century Lowell. Today, the Pawtucket Canal continues to serve both industrial and recreational purposes under the auspices of the Lowell National Historical and State Heritage Parks. Your new home at Canal Place will be immersed in history as well as history-in-the-making.

The warm strength of the old brick exterior of the mill creates confidence in the structural integrity of the new Canal Place. Inside, a stunning tree-filled, twelve story atrium (shown on the back page), crisscrossed by the exposed beams of the original building, becomes a unique "patio" for the

surrounding tiers of front doors.

Canal place offers a diversity of units to suit individual tastes. Buyers may choose from one-, two-, or three-bedroom units in garden or townhouse style. To each two- or three-bedroom unit a gracious, ceramic tile foyer with vaulted ceiling marks the entrance. A large living room and dining area gives a sense of space and gracious living. A fully applianced kitchen, designed for efficiency, a convenient half bath, laundry, and ample closets complete the amenities.

In townhouse units, an open, winding stairway leads to a balcony overlooking the foyer and to the spacious bedrooms, walk-in closets, and full, ceramic tile bath.

Each unit has its own two-zone heating and cooling system. Carpeting, an intercommunication system, a cable

TV hook-up, a rubbish disposal chute on each floor, and thermopane windows are among the many extras. Also included are state-of-the-art security and fire protection systems.

Free parking is available in the adjoining city garage, soon to be accessible by a connecting covered walkway. Interior parking spaces on the lower level of the building may be purchased.

Every aspect of comfortable, cost-efficient living has been incorporated into the condominiums of Canal Place. In addition, at its doorstep, are all the advantages of city living—shopping and restaurants; the Merrimack Repertory Theatre, now in its ninth season; the Lowell Memorial Auditorium, which attracts a wide range of professional performers; Lowell University and its extensive educational and cultural programs; the multiple State and National Park offerings. Prices start in the low 70's.

Discerning buyers are invited to invest in Canal Place—prime property in Lowell, just 28 miles northwest of Boston at the confluence of the Merrimack and Concord Rivers. Here the past blends beautifully with a vital present and a promising future.



Why Rent When
You Can Own?



Elegance! One, two, and three bedrooms; flats and duplexes. Every style and size produces a dramatic, eclectic residence.



Space! An atrium soaring over 100 feet high with fountains, benches, and lush, interior landscaping: an interior park.



History! Housed in a restored mill along the Pawtucket Canal in the heart of downtown Lowell and the historic district.

Our unique financing programs make ownership more affordable than you may think!

Starting in the low \$70's.

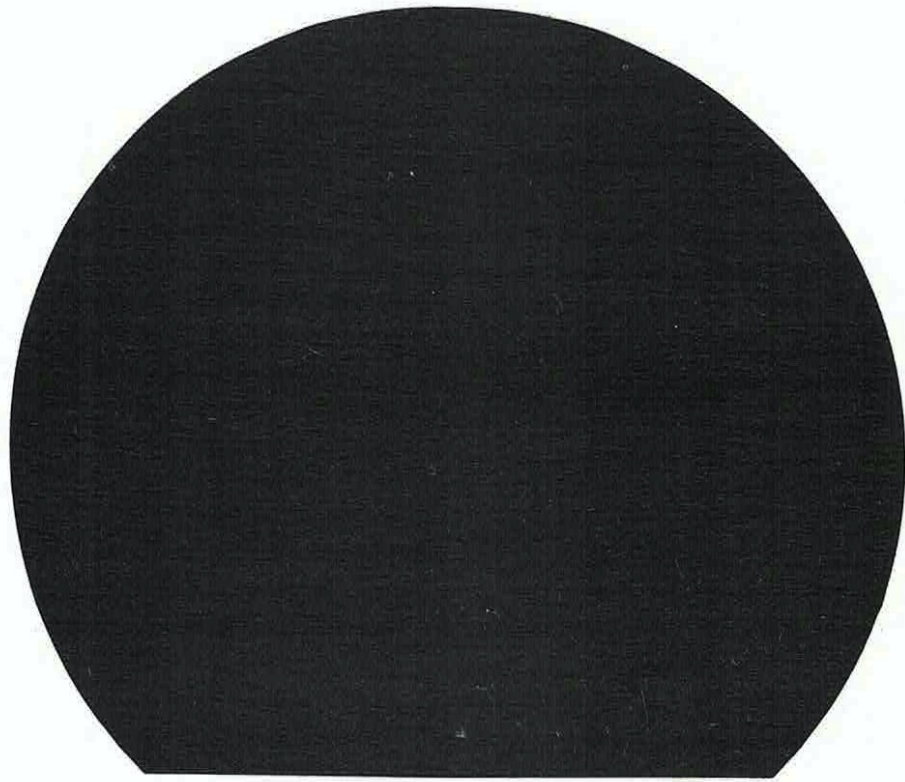
CANAL PLACE

200 Market Street, Lowell, MA 01852

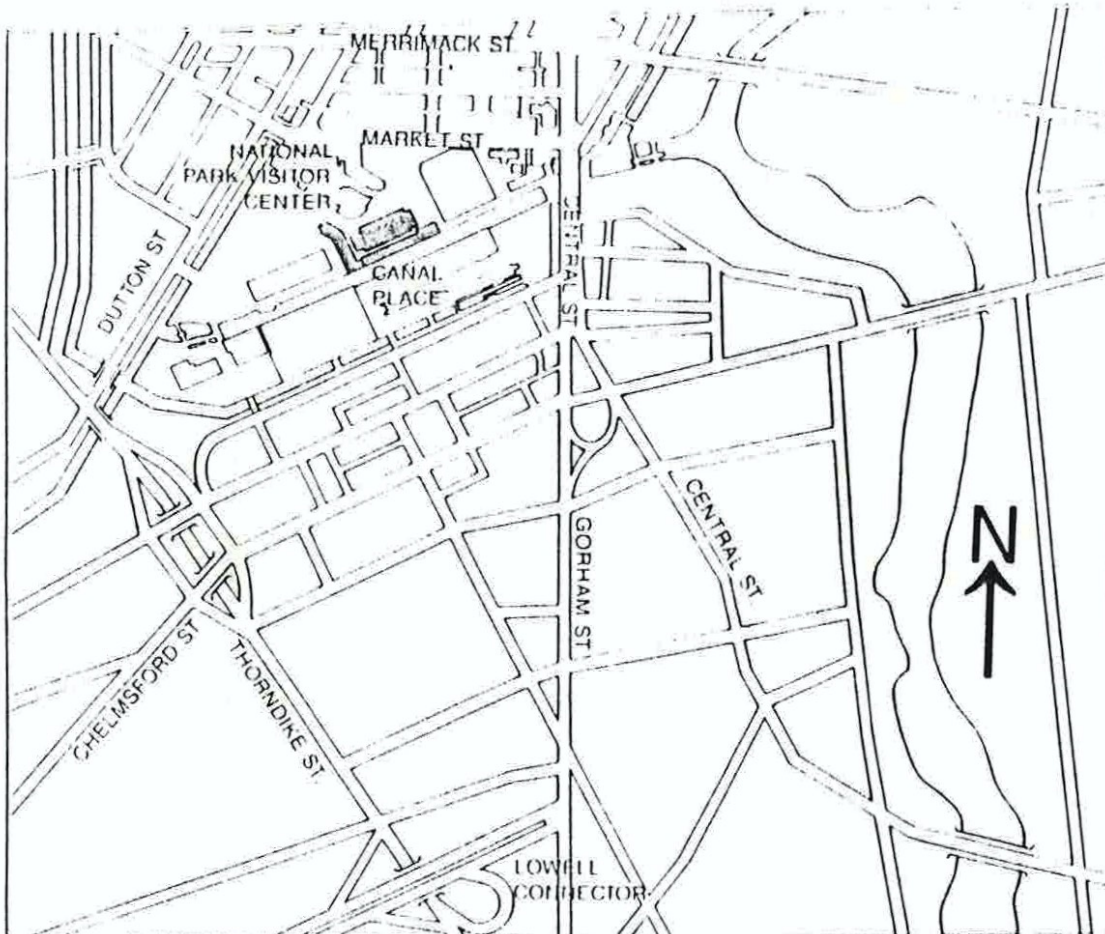
Office Hours: 11:00 a.m. to 4:00 p.m. daily;

Thursday evening until 8:00 p.m.

(508) 454-0009

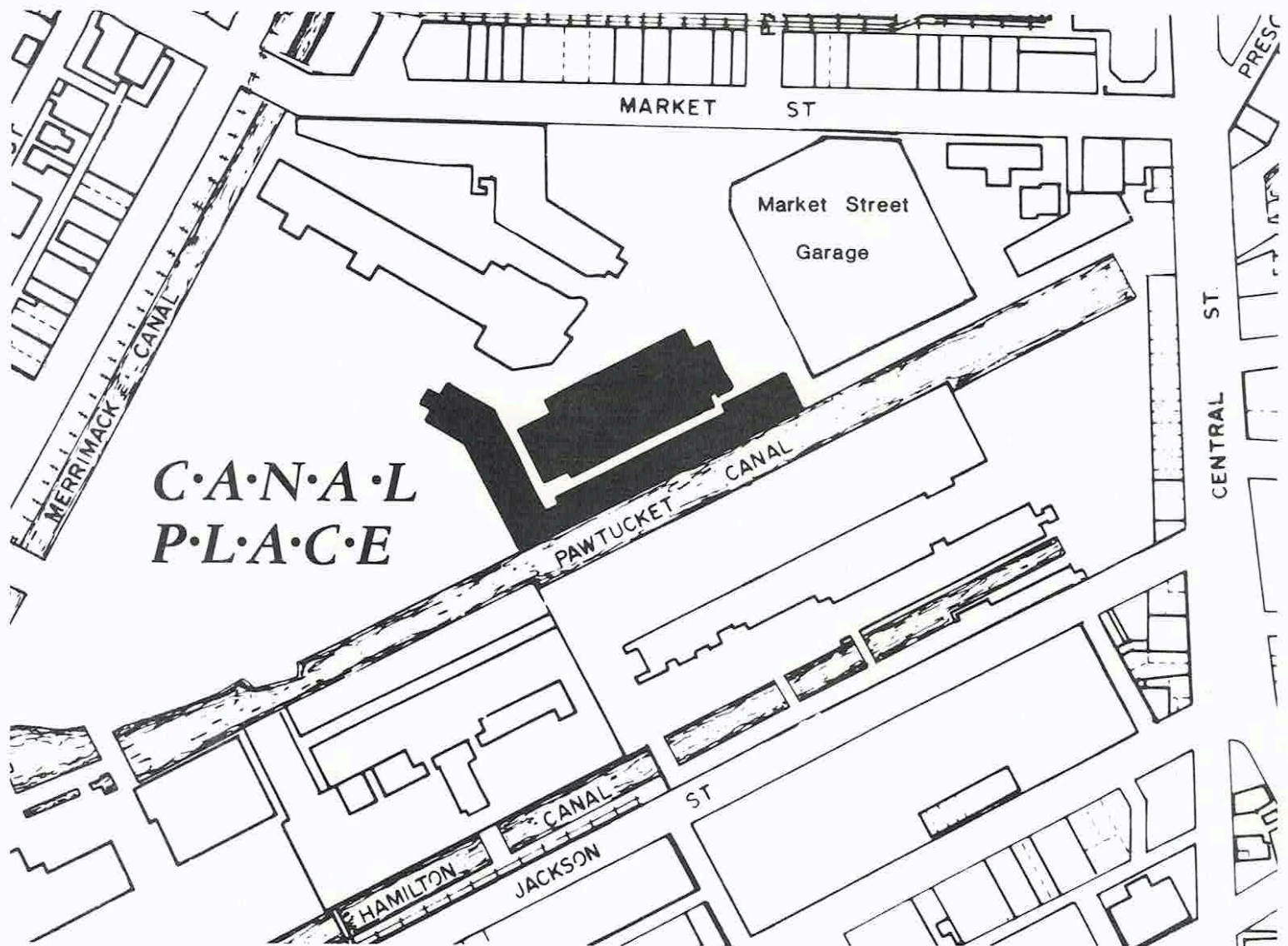


A RENAISSANCE LANDMARK
for
LOWELL • MASSACHUSETTS



To Find Canal Place:

Take Rt. 495 to the Lowell Connector; take Thorndike St. exit; at 5th set of lights, turn right (Dutton St.); take first right onto Market St.; $\frac{1}{8}$ mile down, take right before parking garage; Canal Place is located behind Market Mills.

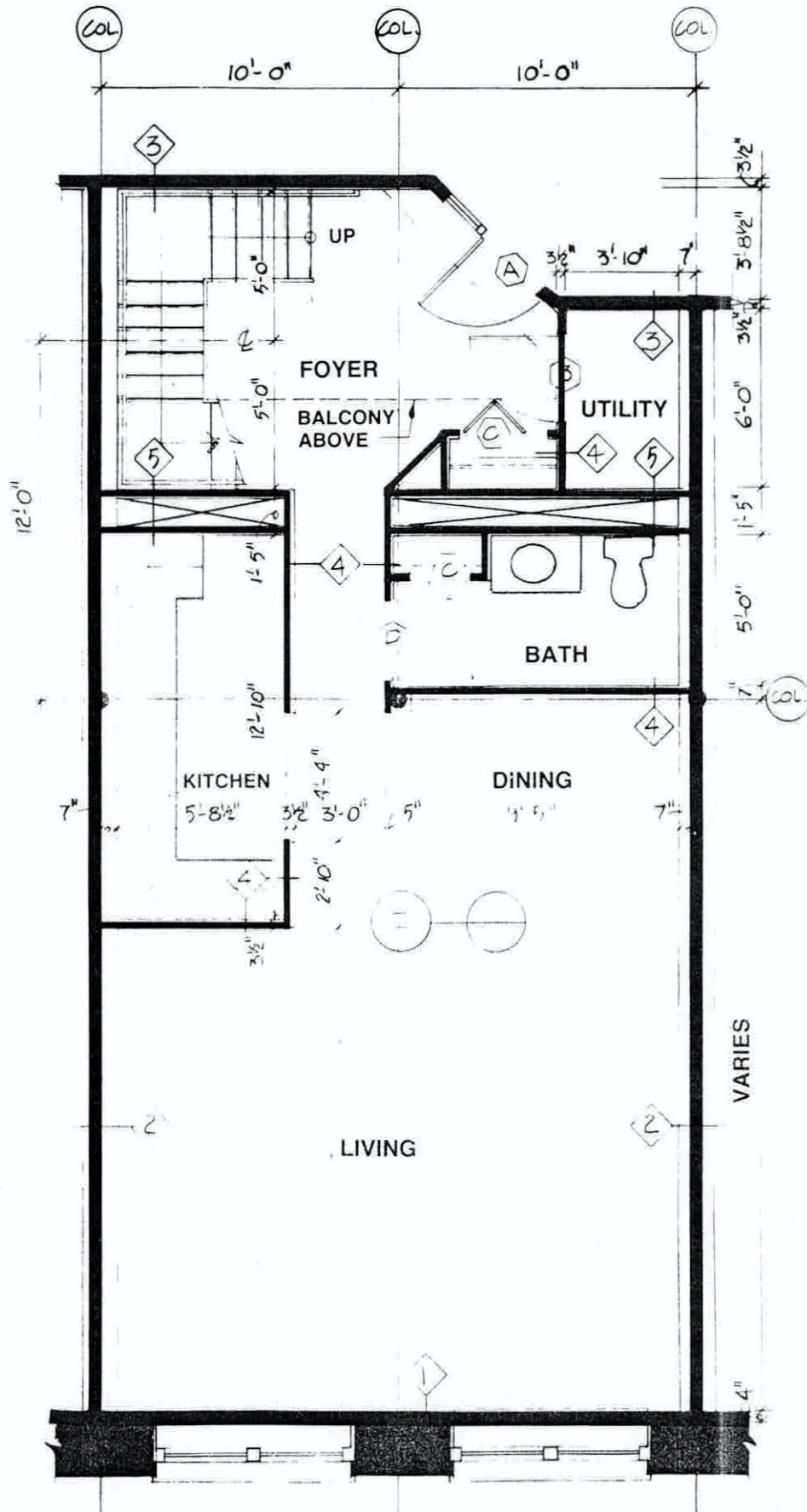


200 Market Street
Lowell, MA 01852
(617) 454-0009

*A Renaissance Landmark
for
Lowell • Massachusetts*



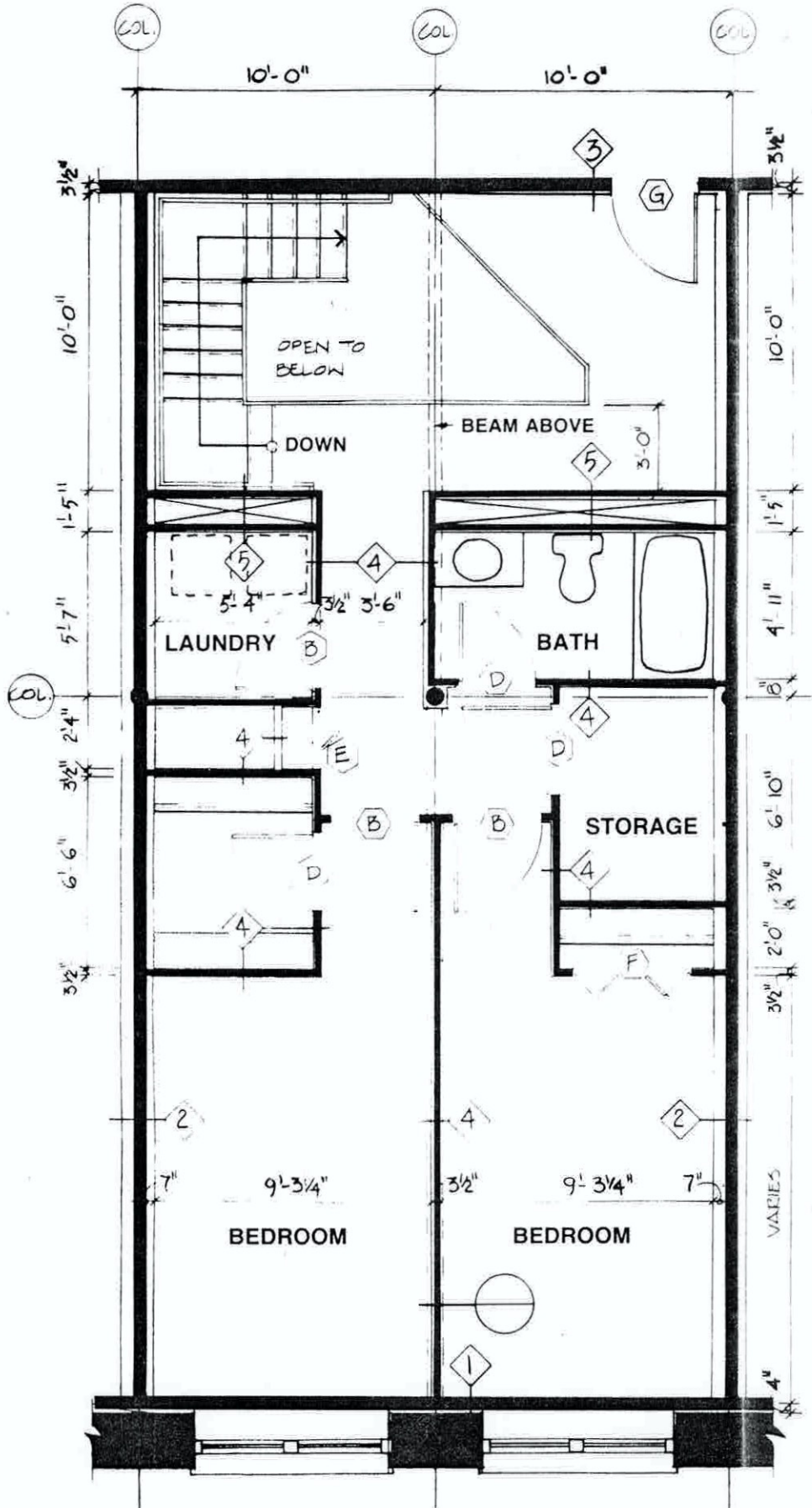
A RENAISSANCE LANDMARK
for
LOWELL • MASSACHUSETTS



LOWER LEVEL

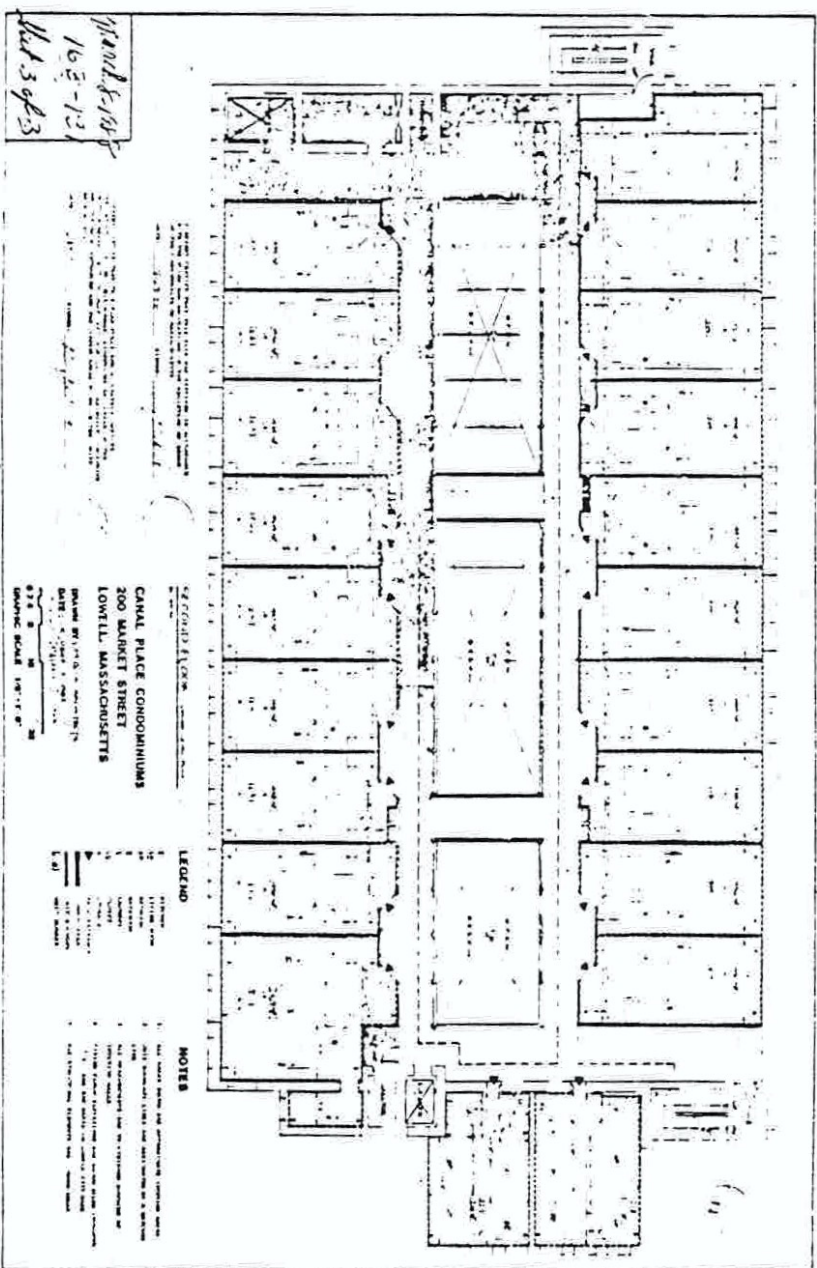


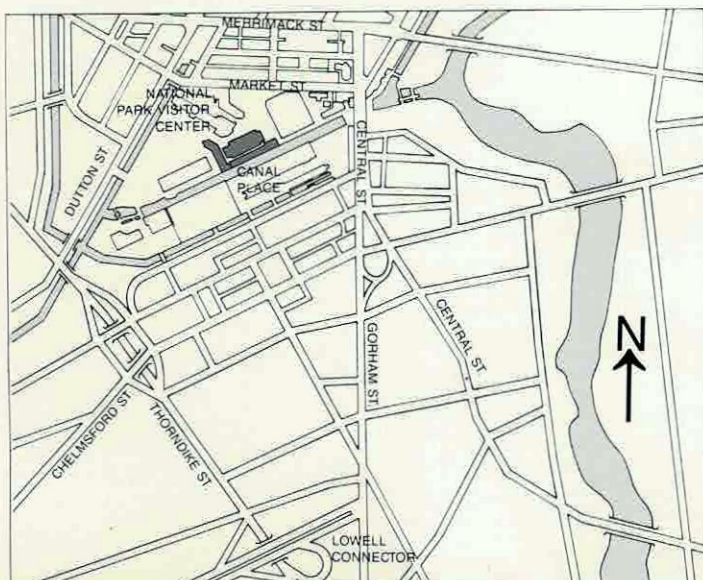
A RENAISSANCE LANDMARK
for
LOWELL • MASSACHUSETTS



UPPER LEVEL

6552





To Find Canal Place:

Take Rt. 495 to the Lowell Connector; take Thorndike St. exit; at first set of lights, turn right (Dutton St.); take first right onto Market St.; $\frac{1}{8}$ mile down, take right before parking garage; Canal Place is located behind Market Mills.

